



SLS-WHT-6953BIUFSM

**SPECIFICATION DATA SHEET**

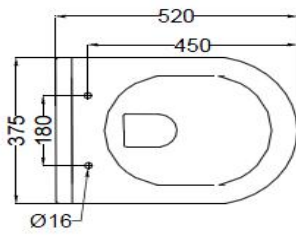
**PRODUCT DETAILS**

<b>Manufacturer</b>	Jaquar	<b>Type</b>	Wall Hung WC
<b>Colour</b>	White	<b>Flush valves</b>	Regular, Dual & I Flush advantages
<b>Outlet</b>	Horizontal	<b>Material</b>	Ceramic - Vitreous China
<b>Technical Details</b>	Internal diameter of inlet hole $\varnothing 58 +2 / -1$ mm External diameter of outlet hole dia. $\varnothing 100 \pm 5$ mm		

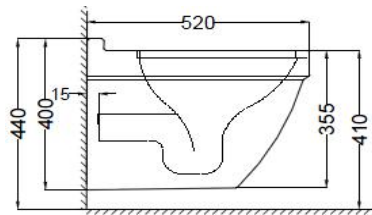
**PRODUCT IMAGE**



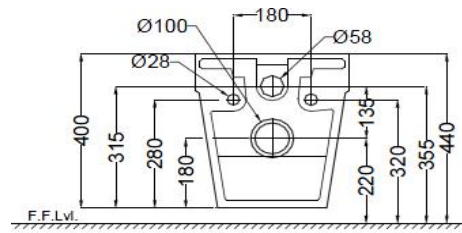
**TECHNICAL DRAWING**



**TOP VIEW**



**SIDE VIEW**



**BACK VIEW**

<b>Product Dimension</b>	375x520x400 mm	<b>FEATURES</b>
<b>Product Weight</b>	26.78	White Finish, Blind Installation, Rimless Bowl Design, Detachable Slim Seat Cover, Anti Germ Glaze, Trap glaze
<b>ACCESSORIES INCLUDED</b>		
UF soft closing seat cover		SLS-WHT-6103UF
Inlet & Outlet gasket		ZPS-WHT-GK01
Fixing kit		ZPS-WHT-FB13
<b>ACCESSORIES EXCLUDED</b>		
Rag bolt		ZPS-SNS-RB07
Concealed Cistern		JCS-WHT-2400S,2400FS,2400WS

**CERTIFICATION**

Compliance : IS 2556.2:2004, IS 2556.1:1994 , EN 997 :2012+A1/CE, SANS 497:2011

All technical dimensions are in accordance to British standards, Bureau of Indian Standards



DISCLAIMER: Our every effort has been made to ensure factual accuracy, the information presented subject to changes due to requirements in different sites, markets and/ or countries. All dimensions are in mm (Tolerance  $\pm 5$  MM). Jaquar reserves the right to make the necessary amendments at any time without prior notice.